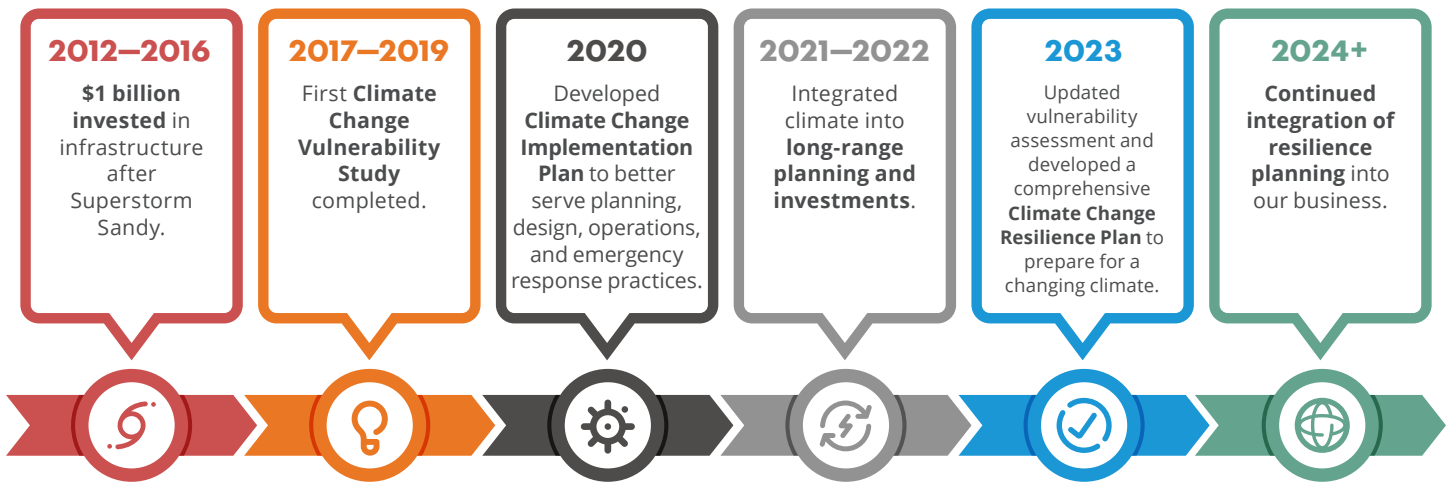


Our Climate Change Resilience Plan Moving Forward

Building Climate Resilience for Our Customers

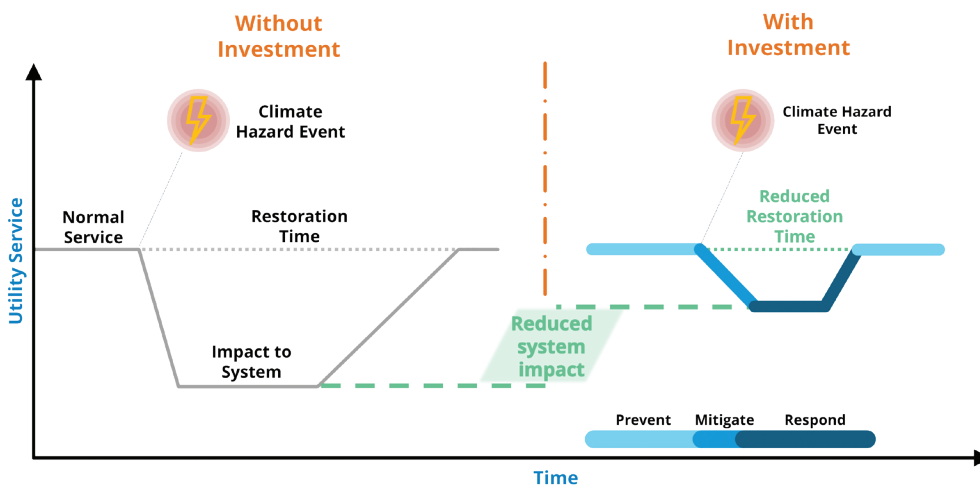
Con Edison has filed a Climate Change Resilience Plan that outlines our proposed investments to enhance our climate resilience. To us, a resilient electric system is one that is prepared for changes in climate and extreme weather and can bounce back quickly after a major event, such as a hurricane. These investments will reduce customer outages and help us restore power more quickly when there is an outage, so you can continue to count on the energy you need.

OUR RESILIENCE JOURNEY



Our **holistic resilience approach** helps us think strategically, innovatively, and equitably about investments to reduce both near- and long-term climate change risks.

The three main strategies in Con Edison’s resilience approach (Prevent, Mitigate, and Respond) help us fortify our infrastructure, systems, and services.



Prevent

Fortify infrastructure to decrease the risk of outages.

Mitigate

Reduce the impact of outages on customers.

Respond

Enhance our recovery from power outages.

A Changing Environment

Electric System Investments for a Resilient Future



HEAT

It's getting hotter faster. By 2030, New York City could experience **up to 17 days per year** (a more than 4x increase from the past) with temperatures **exceeding 95°F**.

Con Edison is investing in resilience by:

- Installing switches and splitting existing feeders to get the power back on faster.
- Piloting cooling equipment for employees to keep our workforce safe and maintain reliability.
- Collecting enhanced weather data to better plan for and respond to heat events.



FLOODING

Heavy rainfall events are getting more intense and happening more frequently. Sea levels are projected to rise 16 inches by 2050, causing more coastal flooding.

Con Edison is investing in resilience by:

- Piloting green infrastructure to naturally absorb rainwater.
- Raising equipment and installing flood barriers to enhance shoreline resilience.
- Installing more submersible equipment in the underground distribution system.



WIND AND ICE

Maximum wind gusts in New York City could increase from 80 mph to 110 mph by mid-century, and even though the region is warming, there is the potential for significant icing events in the winter months.

Con Edison is investing in resilience by:

- Installing more devices that allow for faster restoration of power after an ice storm.
- Using advanced analytics tools to inform updates to the distribution system.
- Converting overhead electrical lines to underground systems.



EXTREME EVENTS

Our weather is becoming more volatile. Science indicates we will likely be hit by stronger hurricanes, more extreme heat waves, and other intense weather events in the future.

Con Edison is investing in resilience by:

- Acquiring mobile substation equipment to supply power in the event of substation outage.
- Enhancing emergency communications to provide customers with more information.
- Building a Storm Resilience Center to serve as a central hub for rapid deployment of emergency response resources.

We're Building a Next-Generation Climate-Resilient Grid for All

Con Edison has released an Environmental Justice policy statement to guide future investments. As part of the decision-making process for investments, the Company will consider potential benefits and impacts to disadvantaged communities.

Follow along for updates on future resilience efforts at conEd.com/Resilience