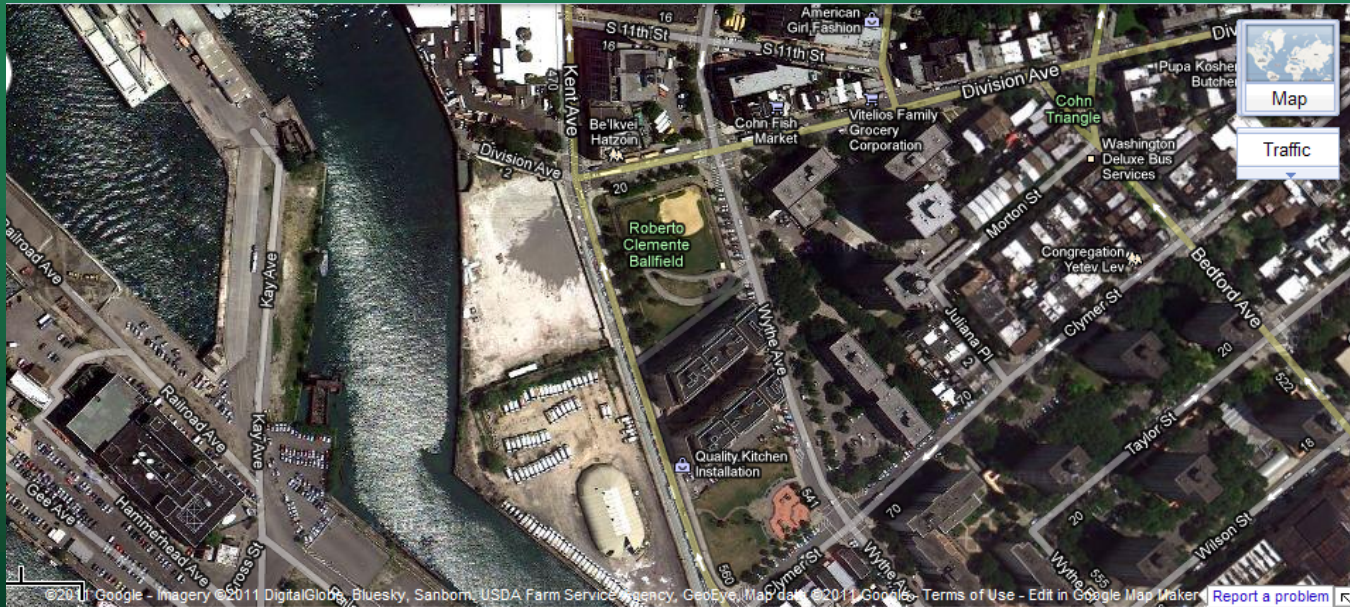


# NYSDEC Public Meeting

## September 12, 2013

### Brooklyn Navy Yard, Building 92



**Former Kent Avenue Site**  
**500 Kent Avenue**  
**Brooklyn, NY 11211**



# Project Representatives

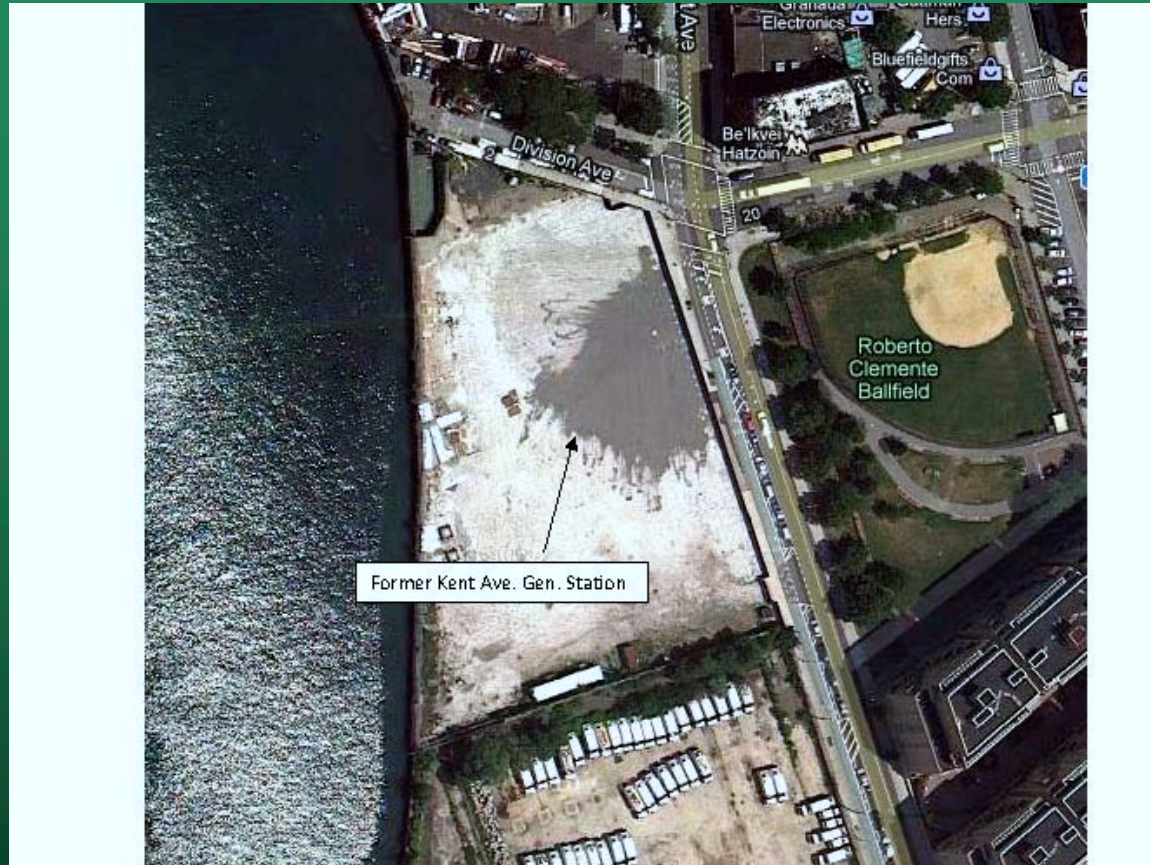
- Douglas MacNeal – NYSDEC Project Manager
- Albert DeMarco – NYSDOH Project Manager
- David Rubin – Consolidated Edison Project Manager



# NYSDEC and NYSDOH Oversight

- NYSDEC and NYSDOH are responsible to ensure that the planned project is protective of human health and the environment.
- NYSDEC and NYSDOH are further responsible to ensure that the project is actually done as planned.
  - Onsite visits/representation
  - Review of daily reports, including perimeter air monitoring data





## Site and Surrounding Area



# Historical Overview

- 1905-1998: power gen. station & electric distribution
- Original Williamsburg Station demolished in 1950s
- Remaining station facilities abated (asbestos/lead paint) and demolished in 2007-2009



# What's the process

- Remedial investigation: nature and extent of contamination.
- Alternatives Analysis
- NYSDEC issues a Proposed Decision Document
- The Alternatives Analysis and Proposed Decision Document are released for public comment



# What's Next

- After the public comment period closes, NYSDEC reviews the comments received and issues a final Decision Document.
- Remedial Design
- Remedial Action



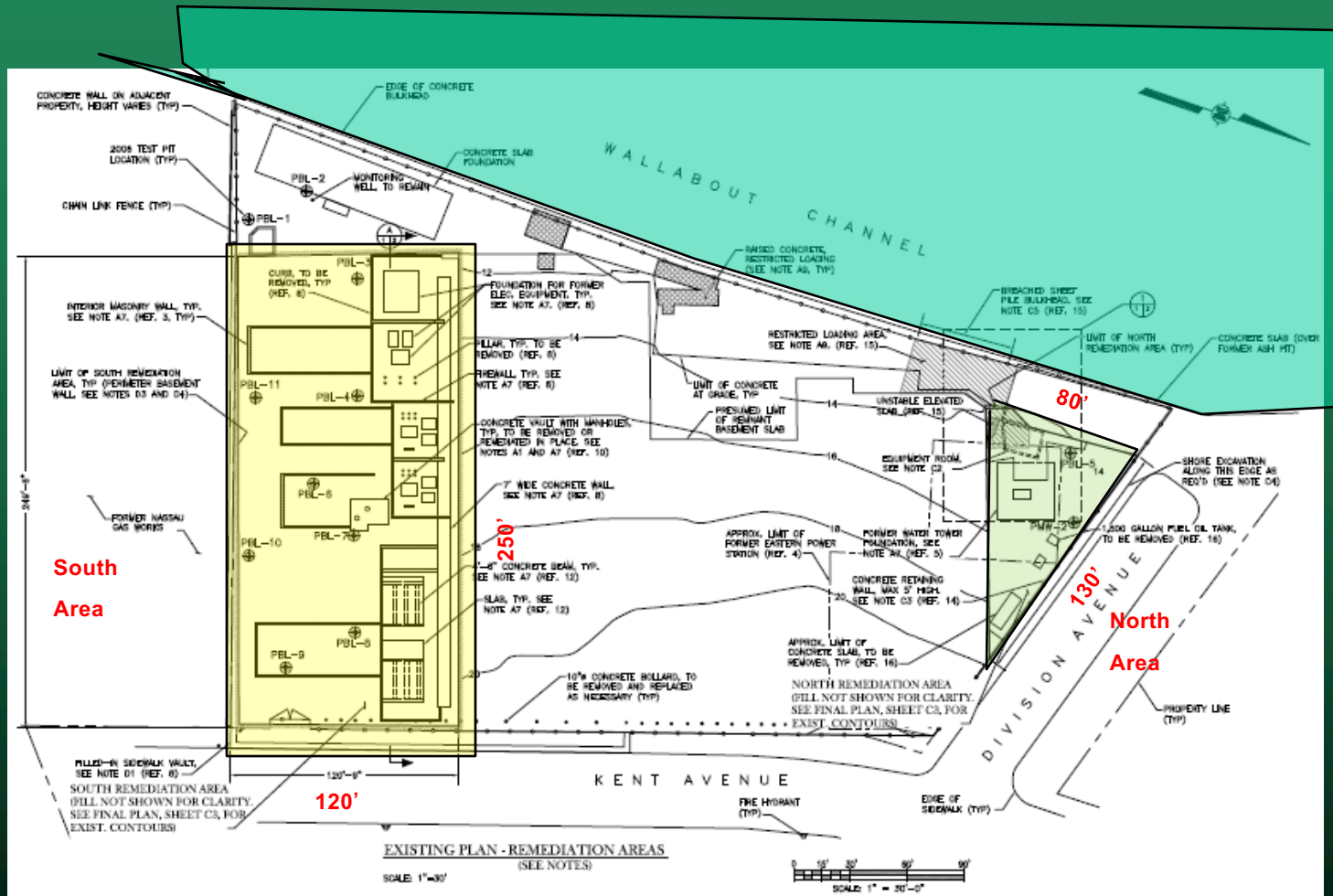
# Site Investigations/Remediation

- Impacted Environmental Media:
  - Groundwater: Volatile Organic Compounds (benzene), Polycyclic Aromatic Hydrocarbons (PAHs);
  - Soil: asbestos, PAHs, metals (arsenic);
- Ash Pit Interim Remedial Measure completed January 2012.





# Site Plan



# Proposed Site Remediation Scope

- Develop plans/obtain permits
- Mobilization/establish abatement control features
- Demolish and remove buried structures/equipment
- Excavate soils for offsite disposal
- Remove Underground Storage Tank and contents
- Water management and disposal
- Restore Site with clean backfill
- Demobilization



# Asbestos Management/Monitoring

NYCDEP Permit requirements:

- Dust control (barriers, wet soil, covered piles)
- Air monitoring
  - third-party sampling/analysis around work areas during soil removal
  - multiple onsite upwind and downwind monitoring stations/ specific asbestos fiber type analysis
  - Work stoppage and corrective action if action levels exceeded
  - data reports available to the public  
[www.coned.com/mgp](http://www.coned.com/mgp)
- NYCDEP inspection and oversight



# Community Air Monitoring Program (CAMP)

- Upwind/downwind site perimeter monitors (vapors/dust)
- Continuous monitoring (reported every 15 minutes)
- Work stoppage/corrective actions if exceed NYSDOH-specified limits above background (DEC and DOH notifications)
- Data available on the website [www.coned.com/mgp](http://www.coned.com/mgp) (Kent Avenue)



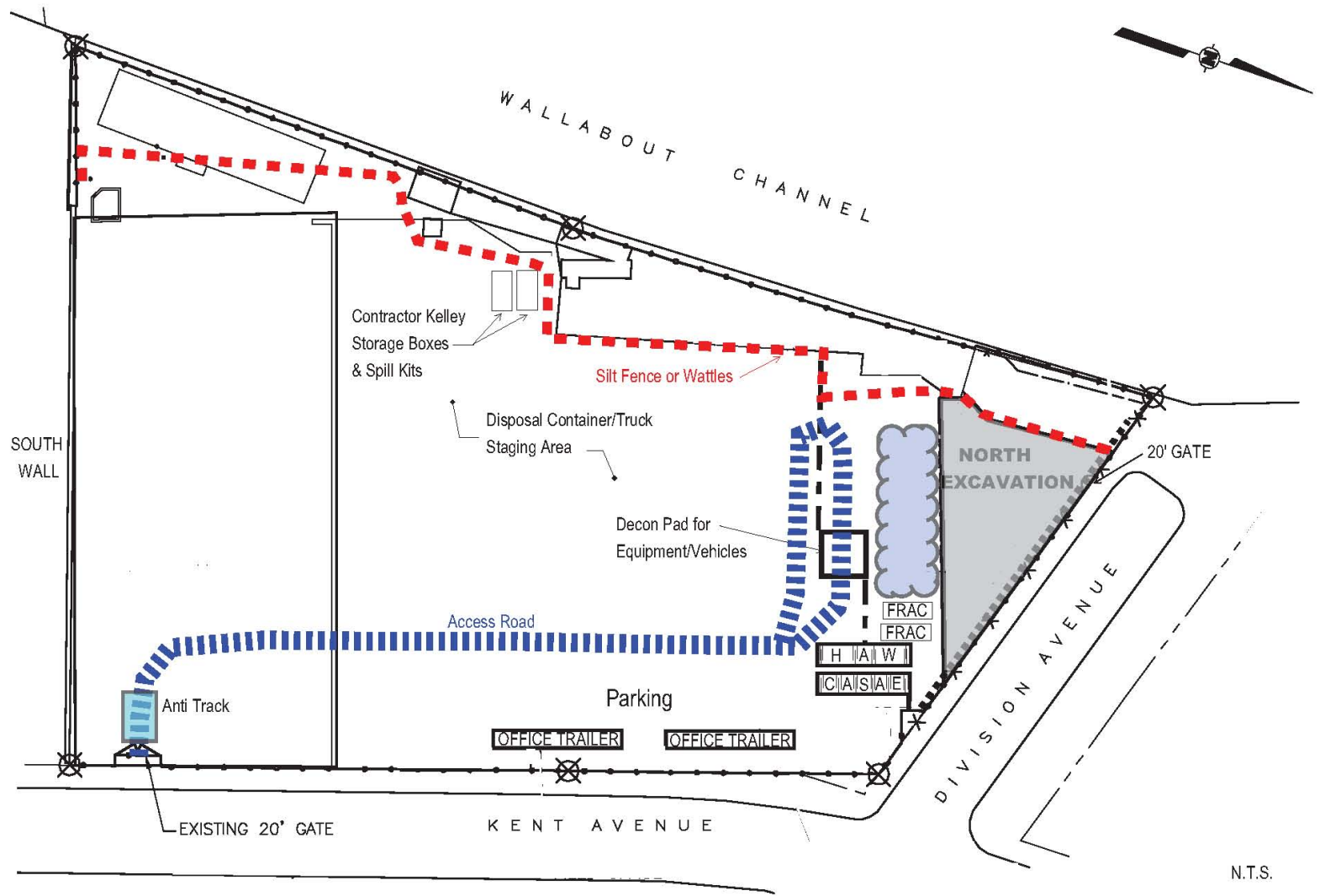


# Additional Environment, Health & Safety Features

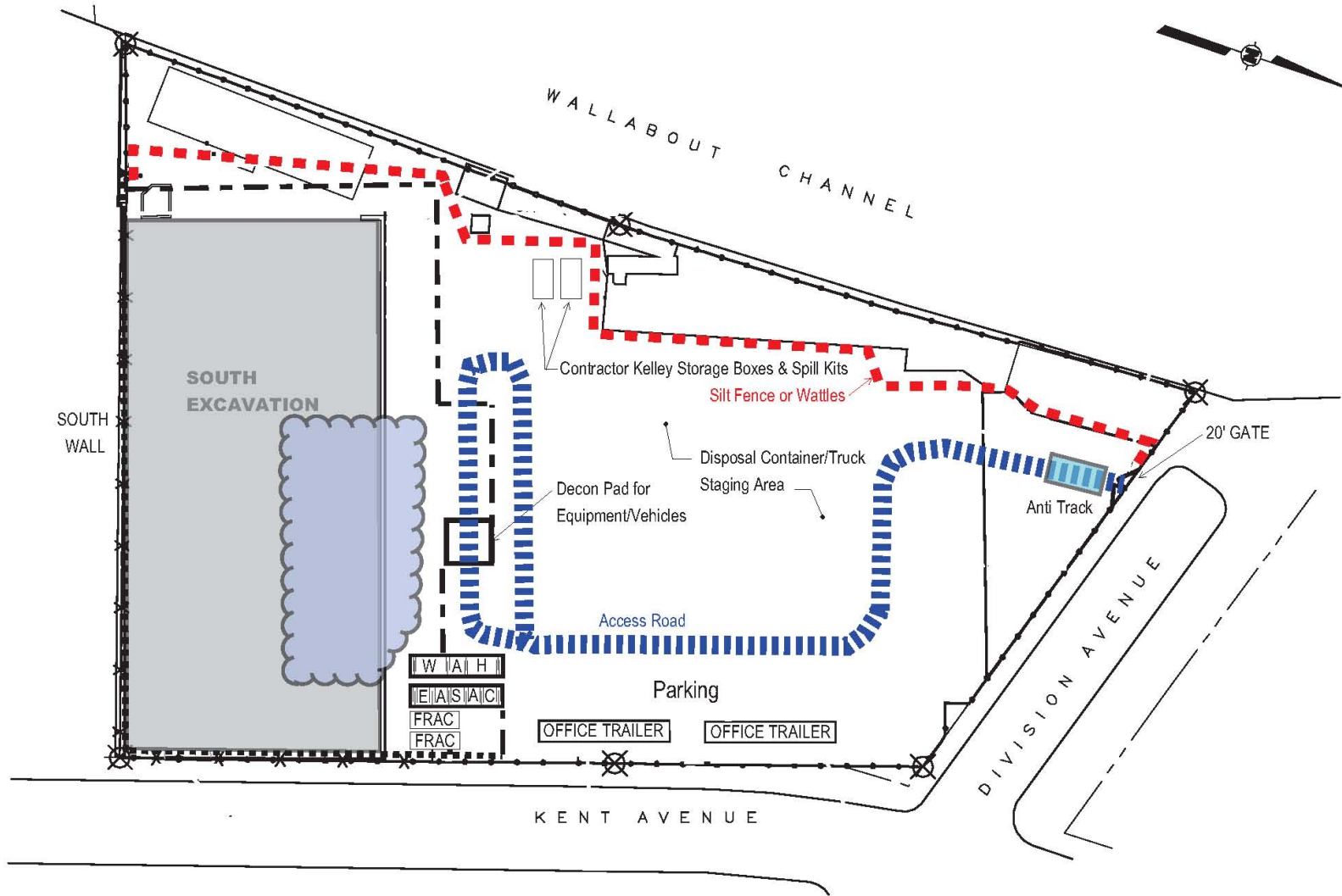
- Odor Control
- Noise Mitigation
- Site Security
- Surface Water Runoff Control
- Spill Prevention/Containment



# Environmental Controls – North Area Remediation



# Environmental Controls – South Area Remediation





# Conceptual Project Schedule

- Plans/Permits: Fall 2013
- Mobilization: Fall 2013
- Buried structures/equipment: Fall/Winter 2013–2014
- Soil excavation/disposal: Fall 2013 – Spring 2014
- Underground Storage Tank removal: Fall 2013
- Onsite Water Management: Fall 2013 – Spring 2014
- Site Restoration: Fall 2013 – Spring 2014
- Demobilization: Spring 2014
- Work Hours: Monday – Friday, 7:00 AM to 6:00 PM



# Project Contacts

## Project-related Questions:

Douglas MacNeal

Project Manager

NYS DEC

Tel:(518) 402-9684

Email: [dkmacnea@gw.dec.state.ny.us](mailto:dkmacnea@gw.dec.state.ny.us)

## Health-related Questions:

Albert DeMarco

Public Health Specialist II

NYS Department of Health

Tel: (518) 402-7860

Email: [bee@health.state.ny.us](mailto:bee@health.state.ny.us)

Antonia Yuille

Director of Brooklyn Public Affairs

Con Edison

30 Flatbush

Brooklyn, NY 11217

Tel: (718) 802-5666

E: [yuillea@coned.com](mailto:yuillea@coned.com)



# Questions?

