



In conjunction with



Dear Interested Citizen:

This fact sheet is to inform you of the site characterization activities planned for the former Hunts Point Works Site.

If you have questions or would like more information, please contact:

Eric Soto
Con Edison
Director, Bronx Public Affairs
511 Theodore Fremd Ave.
Rye, NY 10580
(877) 602-6633

For site-related environmental questions, please contact:

Ronnie Lee
Project Manager
NYSDEC
625 Broadway
Albany, NY 12233
(518) 402-9615
rslee@gw.dec.state.ny.us

For site-related health questions, please contact:

Stephanie L. Selmer
NYSDOH
547 River Street, Flannigan
Square
Troy, NY 12180
(518) 402-7860
beei@health.state.ny.us

Fact Sheet

June 2012

**Hunts Point Works – OU 1 and OU-2
NYSDEC Site # V00554**

Introduction

Consolidated Edison Company of New York, Inc. (Con Edison), in consultation with the New York State Department of Environmental Conservation (NYSDEC) and the New York State Department of Health (NYSDOH), is providing this fact sheet on the upcoming investigation activities planned for the former Hunts Point Works in the Bronx, New York (Figure 1). A portion of this property was once occupied by a manufactured gas plant (MGP).

Project Status and Schedule

Con Edison has entered into a Voluntary Cleanup Agreement (VCA) with the NYSDEC to investigate, and if necessary, remediate potential impacts at former MGP sites. The Hunts Point site has been divided into six operable units (OU). An operable unit represents a portion of a site that for technical or administrative reasons can be addressed separately.

Between June and July 2012, Con Edison will conduct a Site Characterization Study at the Krasdale Foods, Inc. leasehold located at 400 Food Center Drive, as well as the storm sewer pipe, OU-2, located on the northern portion of OU-1. Field activities will include the collection of soil and groundwater samples to determine the presence, if any, and extent of contamination associated with the prior MGP operations. The work will be conducted around the Krasdale facility and the storm sewer pipe located on the northern portion of the site. During the field activities, extensive efforts will be made to protect the community from potential hazards. These efforts will include the use of real-time air monitoring in accordance with the NYSDOH's Community Air Monitoring Plan.

Investigation Goal

The primary goal of the Site Characterization Study is to evaluate whether remnants from MGP operations have impacted human health or the environment. If residual contaminations (remnants) from MGP operations are present, additional sampling may be needed to determine their nature and extent and/or need for remediation. Because MGP remnants are typically found many feet beneath the surface, the public is not exposed through direct contact. Exposure to impacted groundwater through ingestion is also not expected because the area is served by a municipal water system.

Document Repositories related to this project are available at the following locations:

Hunts Point Public Library, 877 Southern Boulevard, Bronx, NY 10459, 718-617-0338, Hours: Mon/Thurs 10am to 7pm, Fri/Sat 10am to 5pm, Tues 10am-6pm, closed Sunday. **Office of the Bronx Borough President Ruben Diaz, Jr.**, 851 Grand Concourse, Bronx, NY 10451. 718-590-3500. Call for hours.

If remedial planning is necessary based on the site investigation results, the scope and basis for a remedial plan will be developed in cooperation with the NYSDEC and NYSDOH and presented to the public for review and comment.

Site Background

The Hunts Point MGP was owned and operated by Con Edison from 1926 to 1962. After the demolition of the plant in 1968, the majority of the Hunts Point MGP site was sold to the City of New York for use as a wholesale cooperative food market (Figure 2).

What are former Manufactured Gas Plants?

Manufactured gas plants were operated between the 1800s and mid-1900s, before the development of natural gas systems, to convert coal and oil into gas for heating, lighting and cooking.

Public Involvement

Public understanding and involvement are an integral part of a successful investigation and remediation program. To provide you with the most up-to-date and accurate information regarding manufactured gas plants, Con Edison has created a series of informational resources including fact sheets, a toll-free hotline, and internet content at www.coned.com/mgp. Information can also be found at the NYSDEC website at www.dec.ny.gov/chemical/8430.html. In addition, a Citizen Participation Plan has been approved by the NYSDEC that outlines the steps to be taken to provide for public participation in the remedial program. Document repositories for site related documents have also been established (listed above) so that concerned citizens can review available information.

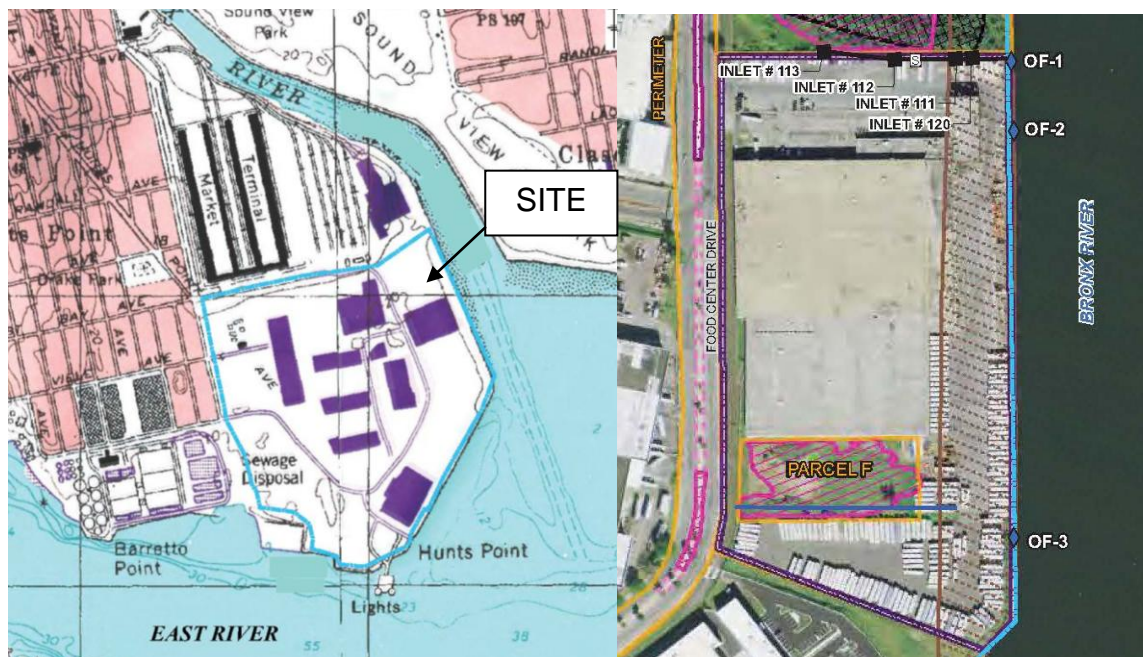


FIGURE 1
Site Location

FIGURE 2
Current Site Layout