

East 115th Street MGP Site Remediation Status Update

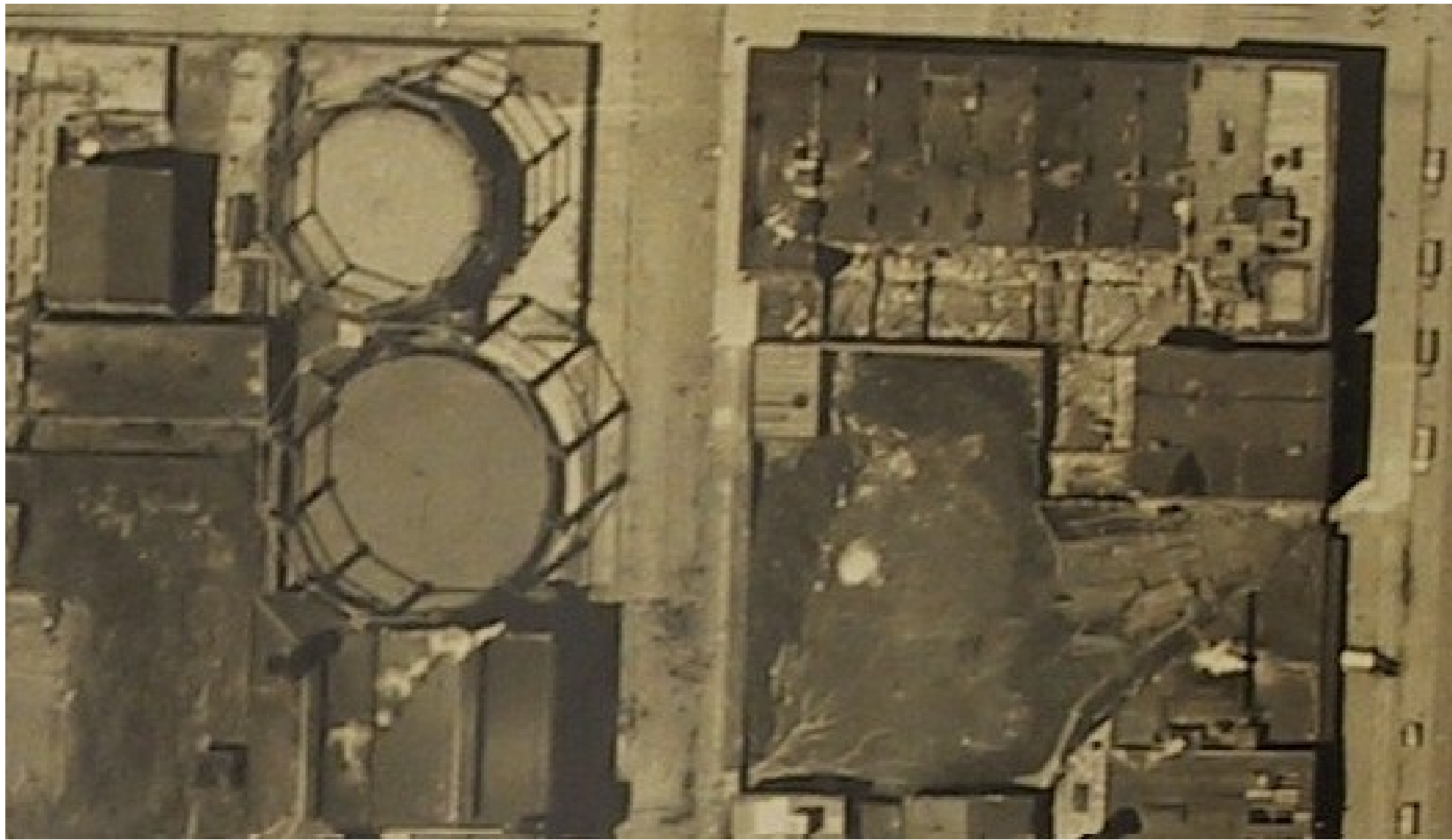
Manhattan Center for Science & Math
Parents Association Meeting
May 17, 2016

Manhattan Center for Science and Math



© 2007 Microsoft Corporation © 2007 Pictometry

East 115th Street Works



MGP History

- Made a combustible gas from coal and petroleum which was used for heating, lighting and cooking
- “Tar” condensed from the gas as it cooled
- Most operated from late 1800-mid 1900s
- Replaced by interstate gas lines
- Con Edison inherited these sites during the consolidation of the utility industry
- E. 115th St. MGP operated from 1895 to 1937
- In 1941, a public high school was built

Con Edison Site Involvement

- Site investigations and indoor air testing conducted since 2002 under NYSDEC and NYSDOH oversight
- Reports and testing results provided to DOE/School
- NYSDEC Decision Document outlining approved site remedy issued in 2009
- Remedial design completed with close involvement of SCA and School
- Remedial construction activities started in Summer 2015

Citizen Participation Plan

- Implementation of community outreach plan approved by NYSDEC
- Fact sheets and public notices at every phase of remediation since 2014
- Update meetings with DOE, school administration, and faculty
- Annual Updates with Parents Association since 2007
- Project information and reports posted at www.coned.com/publicissues
- Toll-free hotline 877-602-6633

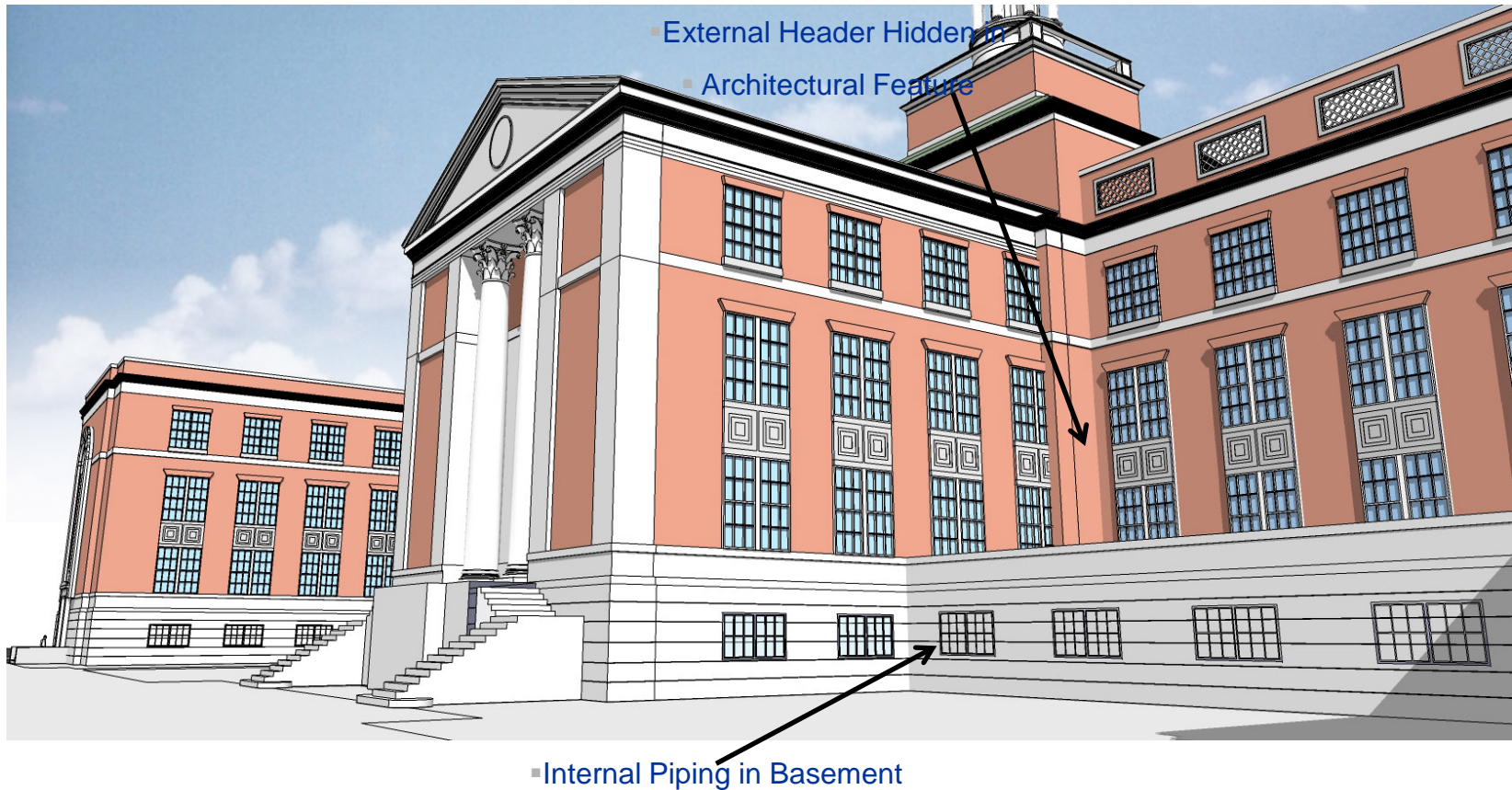
MGP Impacts

- Residual coal tar found in remnant MGP foundation under southern portion of School building
- Coal tar contamination present at depth in soil and groundwater in back of School property
- Coal tar contamination found at depth in Harlem River under layer of clean sediment
- Indoor air quality in School is not affected by coal tar residuals

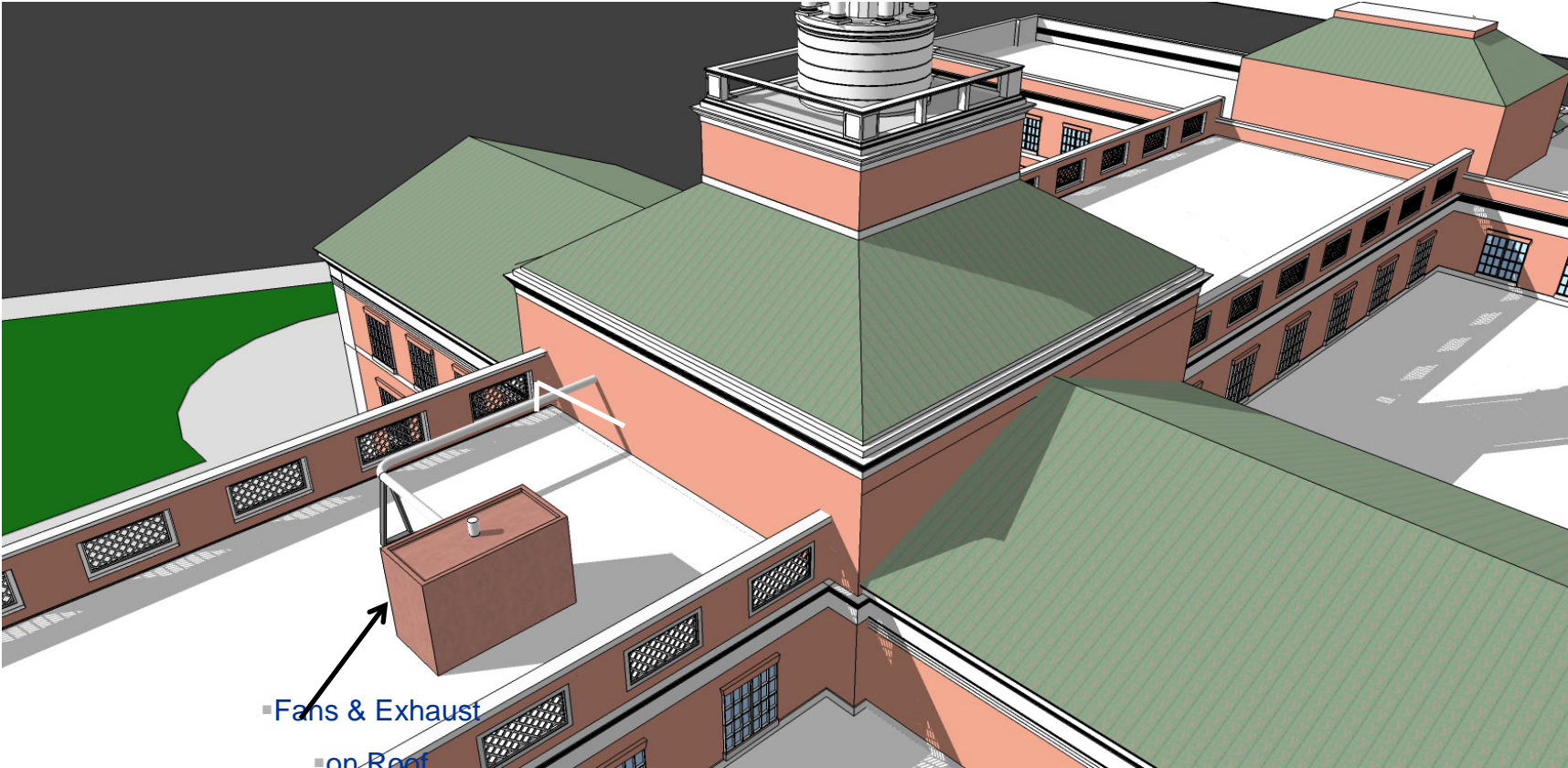
NYSDEC Approved Remedy

- Sub-slab depressurization system (SSDS) in School building to prevent potential vapor intrusion into building
- Underground barrier (series of wells and cement-like columns) along FDR Drive to stop movement of residual coal tar toward Harlem River
- Shallow soil excavation in one area in back of School property
- Site Management Plan (SMP) to guide future excavation work
- Deed restriction prohibiting use of groundwater without prior treatment and requiring compliance with SMP

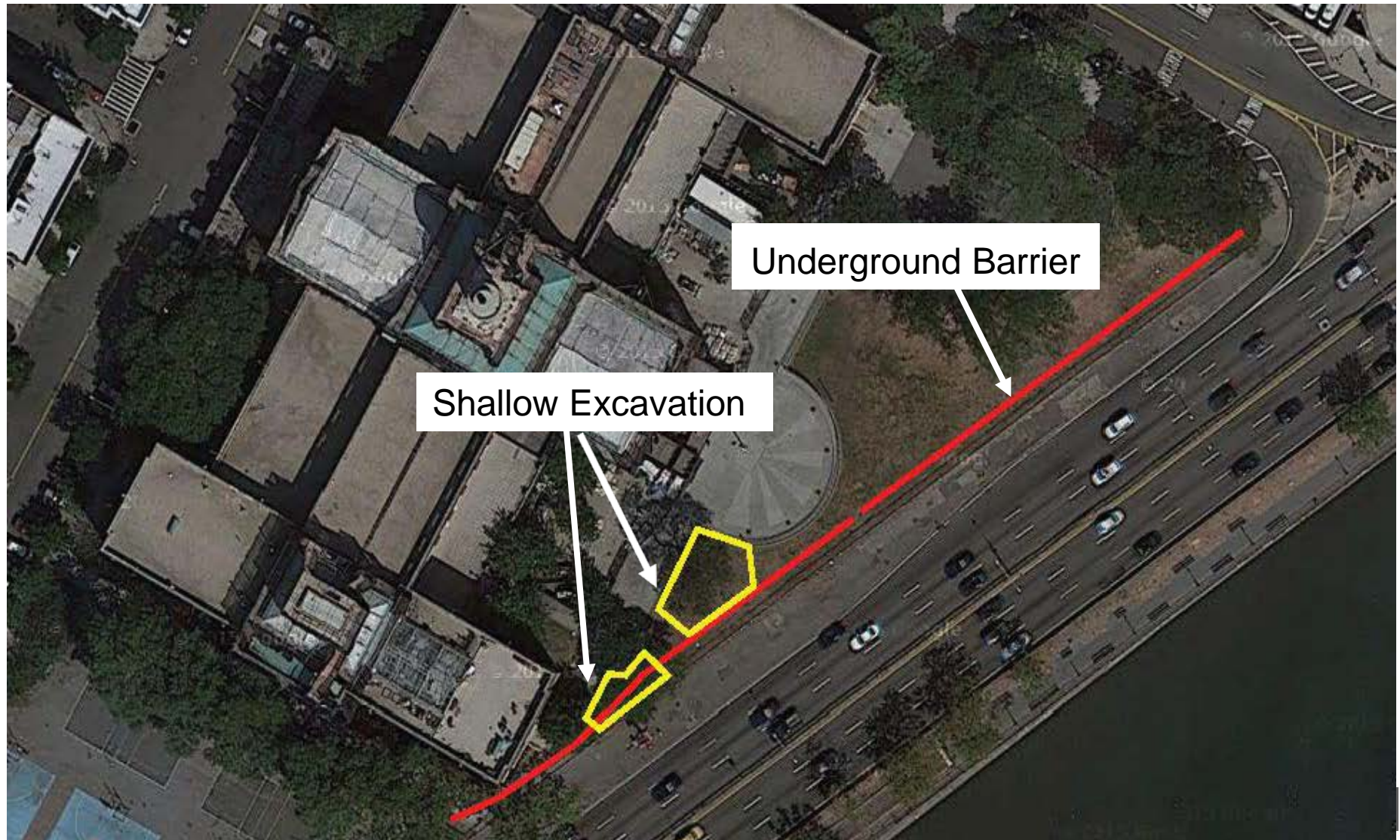
Sub-Slab Depressurization System (SSDS)



SSDS (continued)



Soil Excavation and Underground Barrier



Underground Barrier Construction



Remediation Status

- Indoor air testing conducted since 2002 indicate no MGP impacts
- Indoor air testing will continue until SSDS is constructed
- SSDS construction began in Summer 2015 and will be completed by end of Summer 2016
- Soil excavation and underground barrier work will begin in Summer 2016 and continue through early 2017
- Schedule was determined with input from DOE and School

Construction Site Conditions

- Entire back of School property will be closed for construction
- Construction will be completed in manner which will control dust vapors or nuisance odors
- Traffic and noise control plans will be in place to meet applicable requirements
- Con Edison will provide off-street staff parking
- Six trees on school property will be removed in order to build underground barrier
- 13 new trees (4 shade trees and 9 flowering trees) will be planted when construction is completed

Replacement Trees



QUESTIONS?