

East 115th Street MGP Site Remediation Update

Manhattan Center for Science & Math

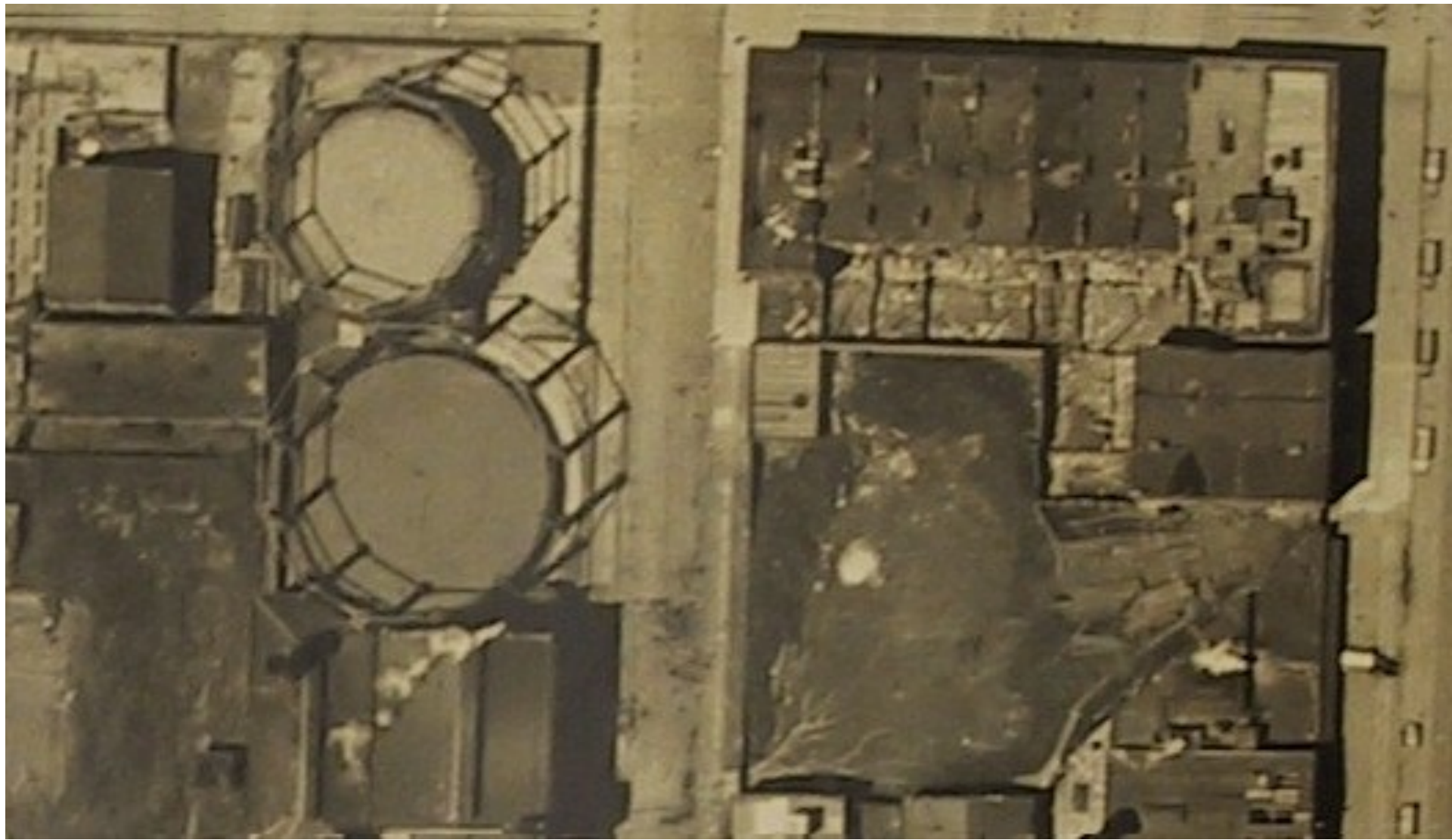
Parents Association Meeting
November 15, 2016

Manhattan Center for Science and Mathematics



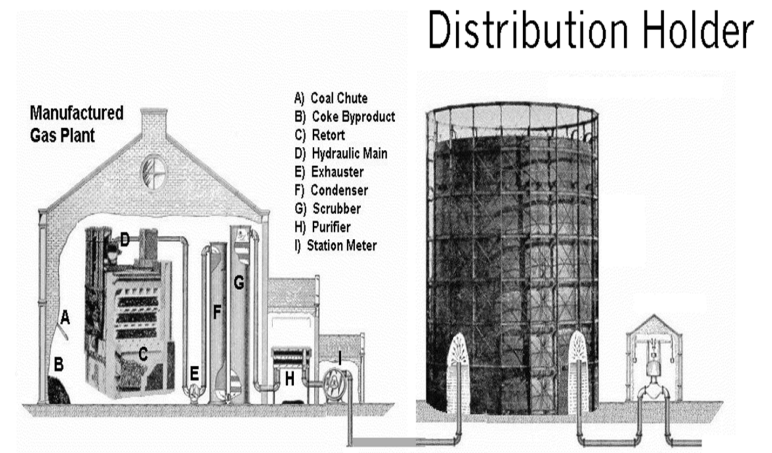
© 2007 Microsoft Corporation © 2007 Pictometry

East 115th Street Works



Manufactured Gas Plant (MGP) History

- Combustible gas from coal and petroleum used for heating, lighting and cooking
- “Tar” condensed from the gas as cooled
- Replaced by interstate gas lines
- Con Edison inherited MGP sites
- E. 115th St. MGP operated from 1895 to 1937
- In 1941, a public school was built

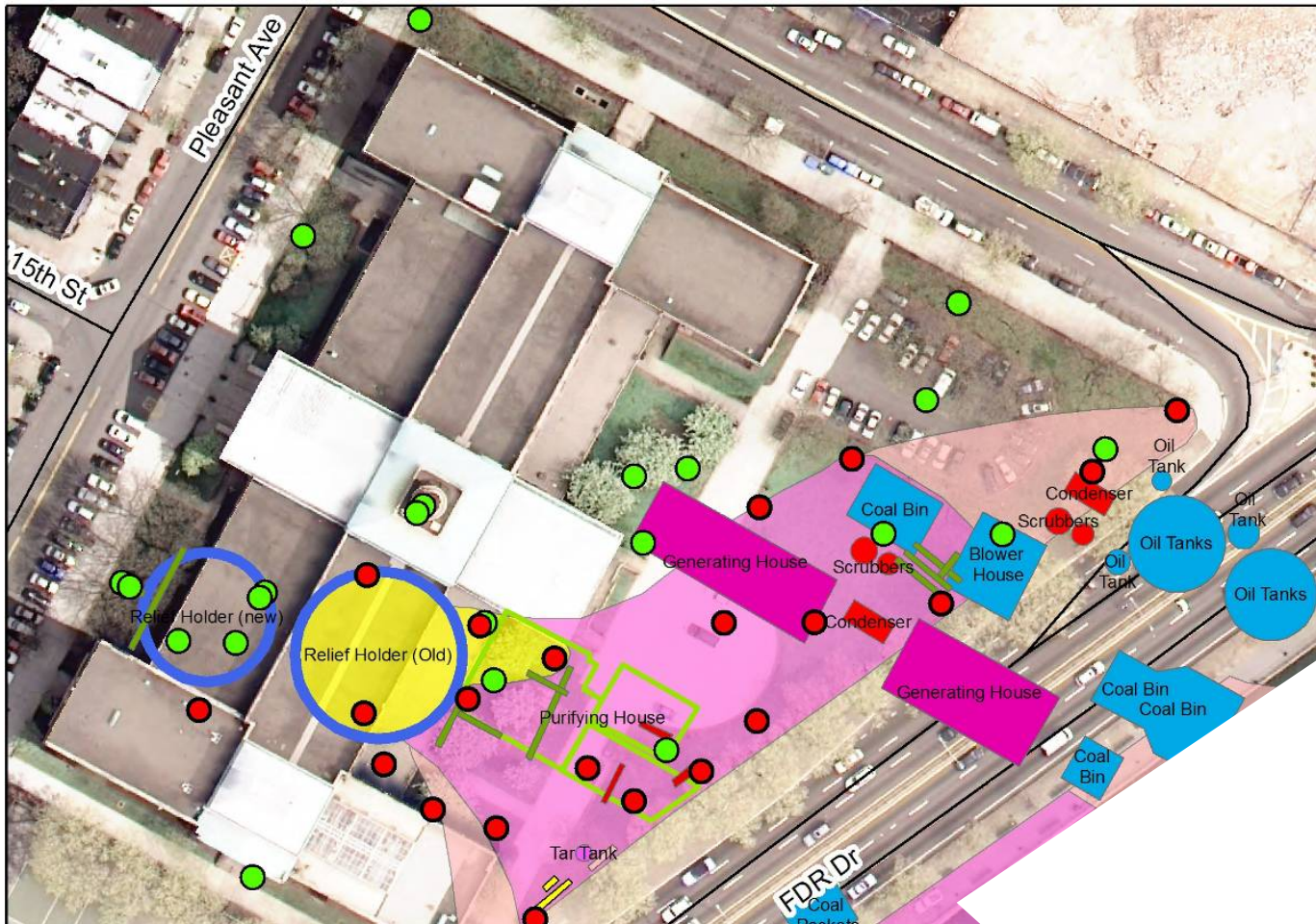


Investigation & Remediation Activities to Date

- Site investigations and indoor air testing since 2002
- NYSDEC approved site remedy in 2009
- Remedial design completed with SCA and School
- Remedial construction activities started in Summer 2015 and continue today



Investigation Findings



NYSDEC Approved Remedy

- Sub-slab depressurization system (SSDS) to prevent potential vapor intrusion in school building
- Shallow soil excavation in one area in back of school property
- Underground barrier along FDR Drive to prevent residual coal tar from entering Harlem River
- Site Management Plan (SMP) to guide future excavation
- Deed restriction prohibiting use of groundwater without prior treatment and requiring compliance with SMP

Citizen Participation Plan

- Community outreach plan approved by NYSDEC
- Fact sheets and public notices at every phase
- Annual Updates with Parents Association since 2007
- www.coned.com/publicissues
- Toll-free hotline 877-602-6633

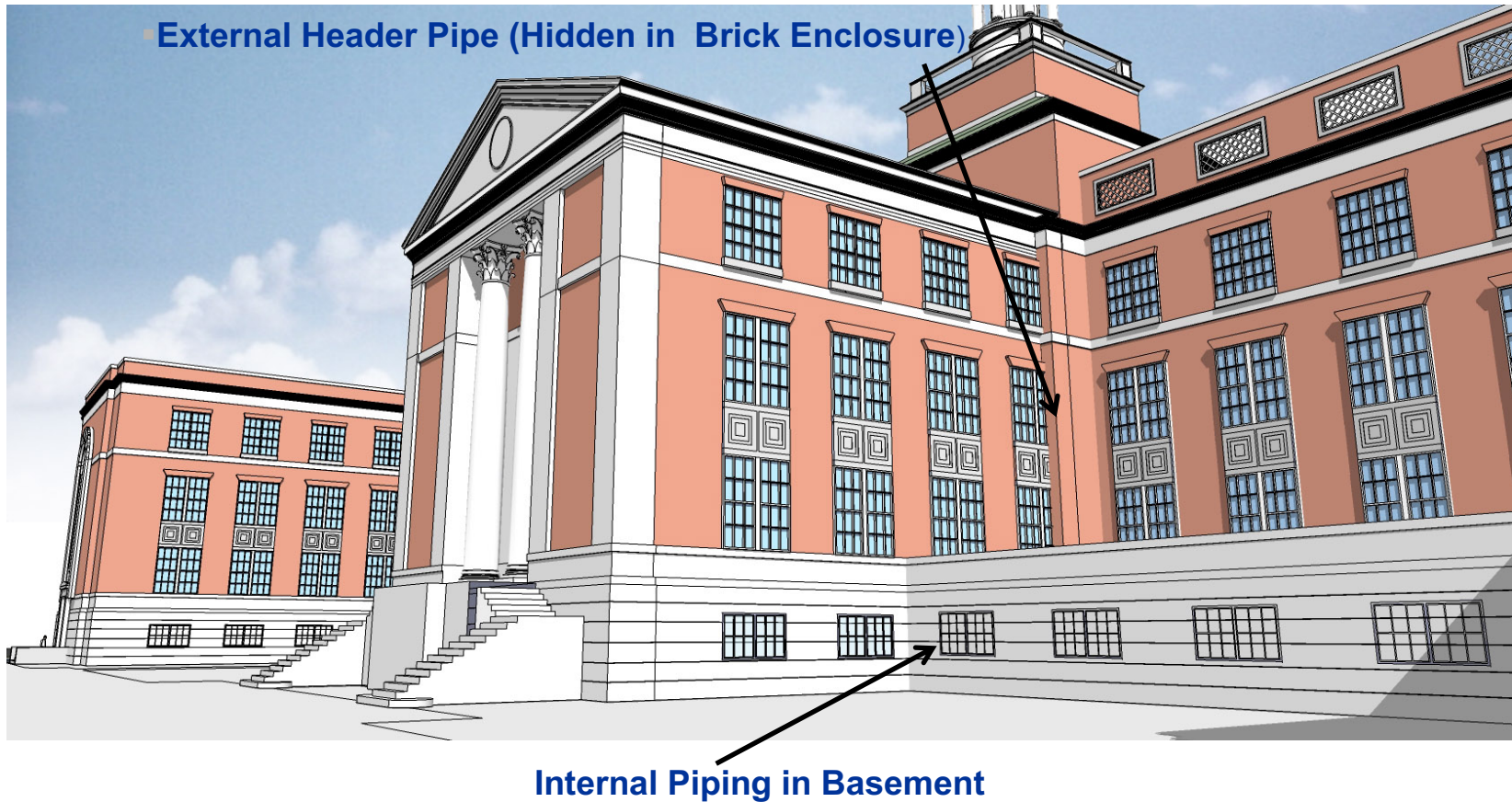
Remediation Update

- Indoor air testing conducted since 2002 indicate no MGP impacts
- Indoor air testing will continue until SSDS is constructed
- SSDS construction began in Summer 2015 and will be completed in 2017
- Shallow soil excavation was completed in Summer 2016.
- Underground barrier work began in Summer 2016 and will continue through second quarter 2017
- Schedule was determined with input from DOE and School

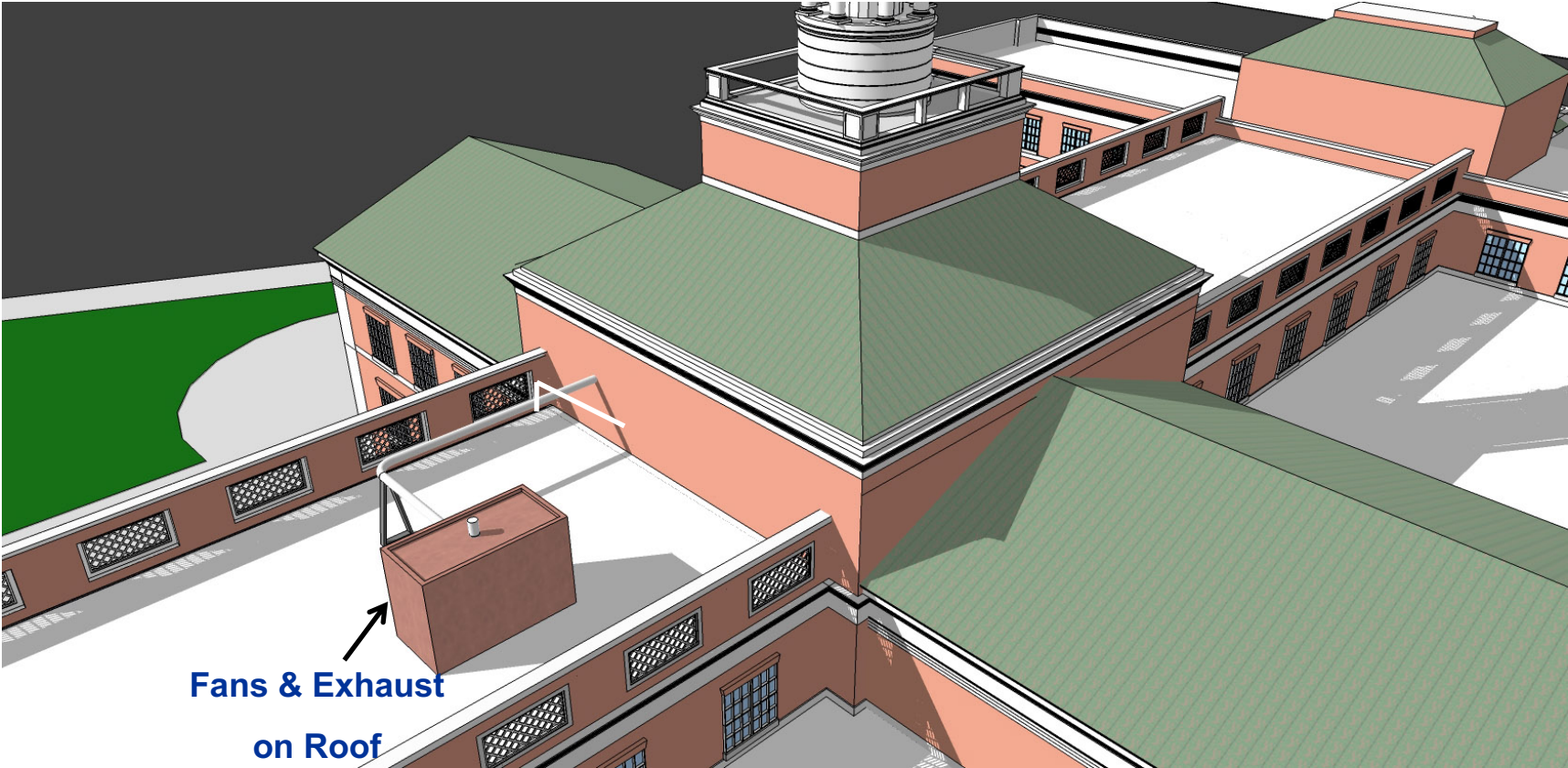
Construction Hazard Controls

- Physical barriers to prevent access to work areas
- Emergency egress for students and staff
- Real-time air monitoring to detect contaminants that may be released into the air.
- Odor control
- Noise mitigation
- The entire backyard of the school property will remain closed throughout the duration of the construction

Sub-Slab Depressurization System (SSDS)



SSDS (continued)



Shallow Soil Excavation



Subsurface Barrier Wall Construction



Replacement Trees



QUESTIONS?