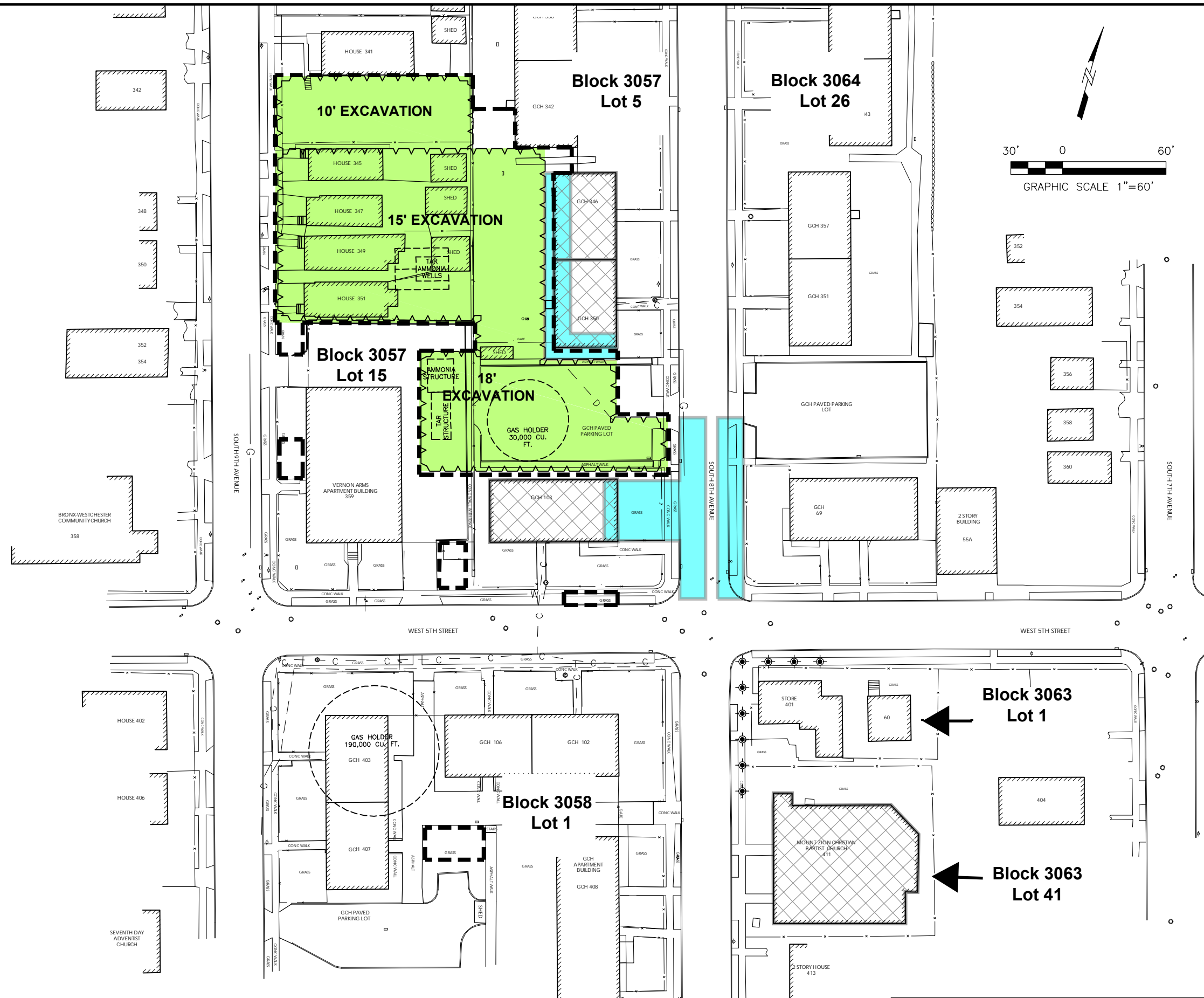


File: F:\PROJECTS\Consolidated Edison NY\Mt Vernon\19067\CADD\BASR_Update\CECN5-19067-RU-08.dwg Layout: Opt Rem Act User: warren Plotted: Jun 11, 2009 - 9:56am Xref's:

AECOM



LEGEND

- CURRENT BUILDING FENCE
- STONE WALL
- HISTORIC FEATURES
- ELECTRIC LINE
- DRAINAGE LINE
- COMMUNICATION LINE
- GAS LINE
- WATER LINE
- WATER VALVE
- WATER HYDRANT
- CATCHBASIN
- ROUND CATCHBASIN
- UNIDENTIFIED MANHOLE
- ELECTRIC MANHOLE
- COMMUNICATION MANHOLE
- GAS VALVE
- OIL FILL
- LIMITS OF SURFACE SOIL EXCAVATION
- LIMITS OF SUBSURFACE EXCAVATION
- EXCAVATION SHORING
- AREA WHERE SOIL VENTING SYSTEMS WILL BE INSTALLED
- LIMITS OF IN SITU OXIDATION
- OXYGEN INJECTION POINTS

FORMER MGP SITE
MOUNT VERNON, NEW YORK
01869-172-100
DATE: 06/08/09 DRWN: RCW/CON

Exhibit B
Engineering Drawing Depicting The
DEC-Approved Site Remediation Plan