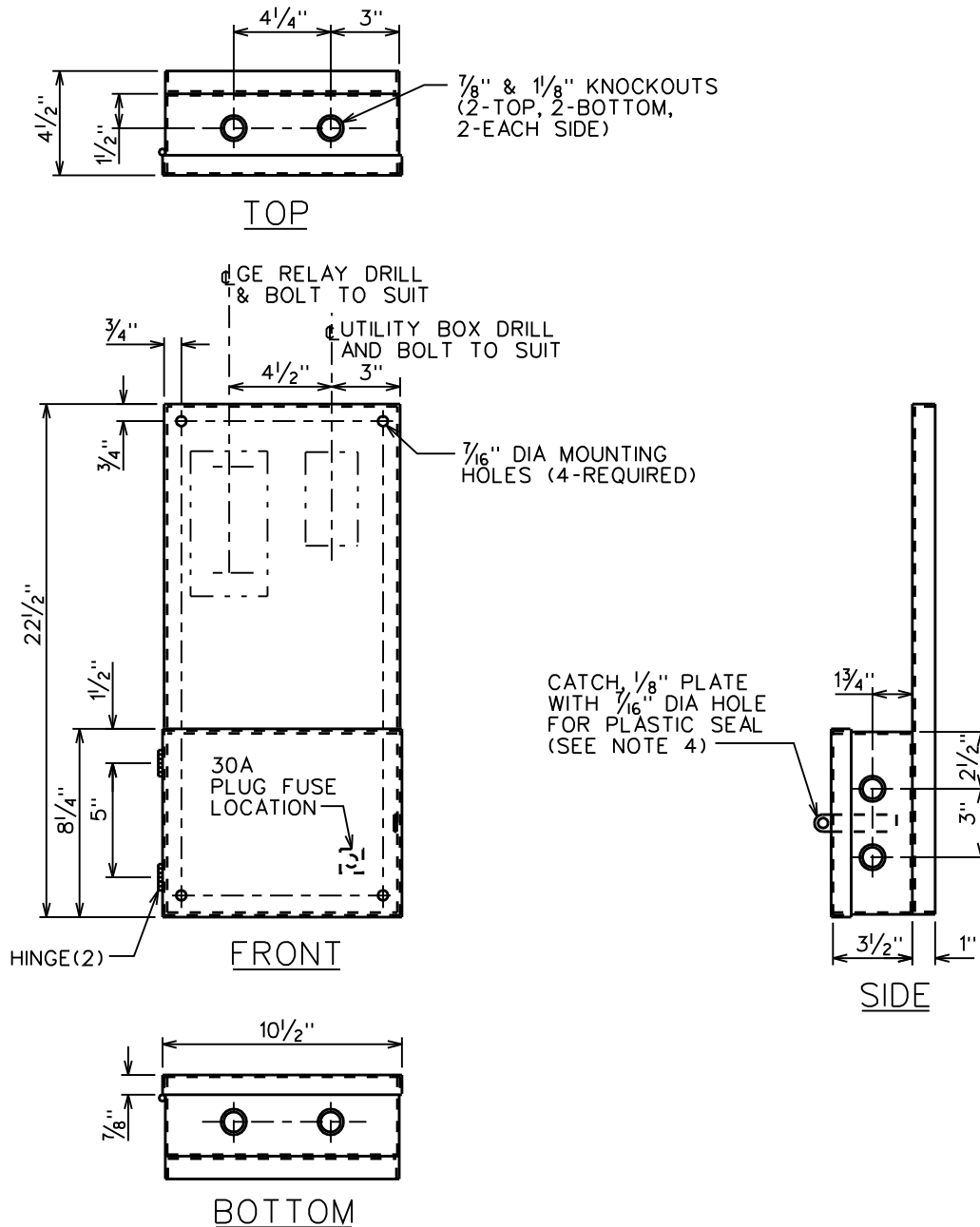


669-S

REVISIONS

1

CONVERTED TO
MICROSTATION,
REVISED NOTES
LRD(SEA) 01/20/06



NOTES:

1. THE CABINET SHALL BE 14 GAUGE SHEET METAL AND THE BACK PLATE AND SHIELD SHALL BE 12 GAUGE SHEET METAL.
2. UNLESS OTHERWISE SPECIFIED TOLERANCE ON VERTICAL TAPPED HOLE TO BE ± 0.010 ". AND ARE TO HAVE AT LEAST THREE COMPLETE THREADS.
3. ALL STEEL SURFACES SHALL HAVE A PROTECTIVE COATING OF GRAY ENAMEL, A.C. HORN CO NO.1614, SHERMAN-WILLIAMS CO NO.18076 OR DEVOE & REYNOLDS CO NO.21.
4. CABINET DOOR SHALL BE PROVIDED WITH CATCH AND FACILITY TO ACCOMODATE STANDARD SEALS AND PADLOCK WITH $\frac{5}{16}$ " DIA HASP.
5. THE EQUIPMENT SHALL MEET THE REQUIREMENTS OF THE NATIONAL BOARD OF FIRE UNDERWRITERS, AND THE DEPARTMENT OF PUBLIC WORKS OF THE CITY OF NEW YORK.
6. SAMPLES OF THE CABINET SHALL BE SUBMITTED TO THE STEAM ENGINEERING DEPARTMENT FOR APPROVAL.
7. A NAME PLATE SHALL BE AFFIXED TO THE OUTSIDE OF THE ENCLOSURE INDICATING THE MANUFACTURERS NAME AND CATALOG NO.

MOUNTING PANEL FOR VORTEX METER RELAY FOR CONTROL OF MOTOR OPERATED BALL VALVE

CONSOLIDATED EDISON COMPANY OF N.Y., INC.
STEAM DISTRIBUTION ENGINEERING

DATE 01-05-90
LAST REV. 01-20-06

DWG.
NO.

S-599

REV.

1