

8-19891-03

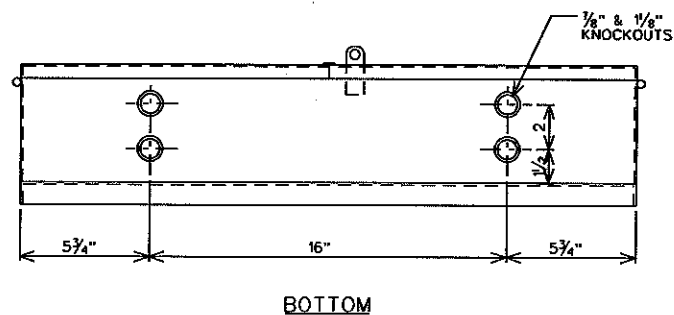
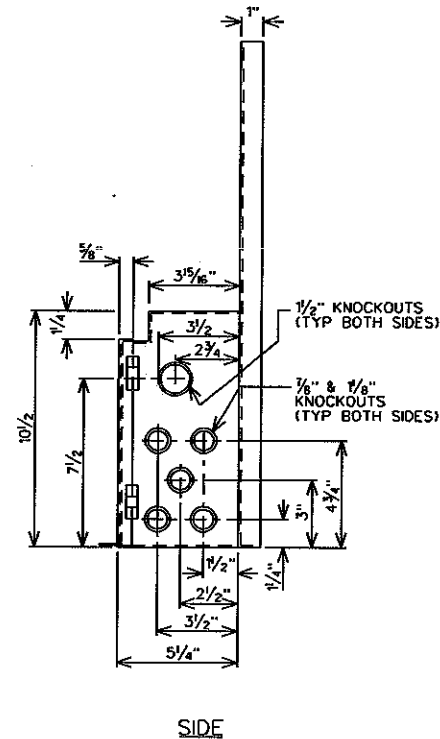
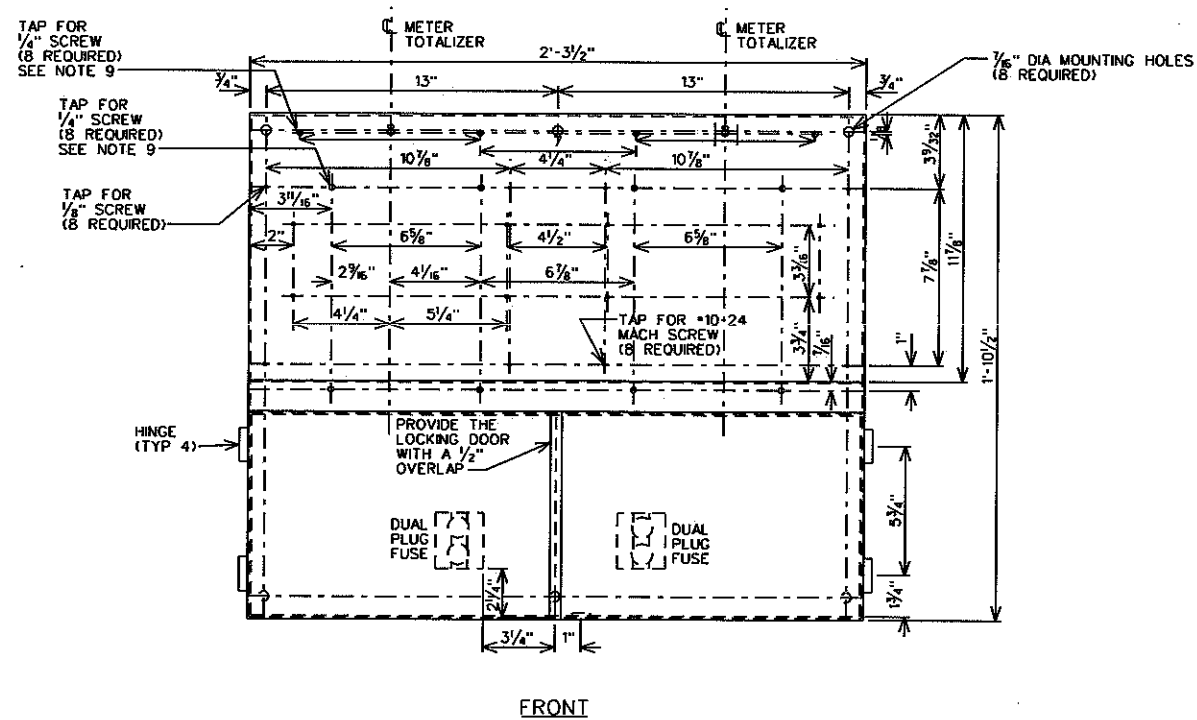
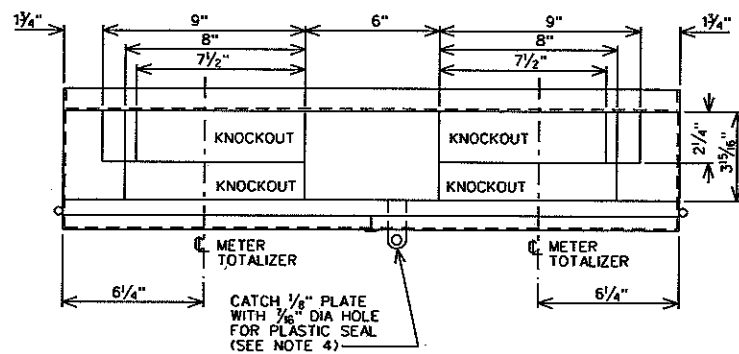
REVISIONS

3

CONVERTED TO MICROSTATION (LRD/SEA) 01/20/06

4

CORRECTED PANEL SIZE BACT TO REV. 2 (J.SMALLS)



NOTES:

1. THE CABINET SHALL BE OF NO. 14 USS GAUGE AND THE BACK PLATE AND SHIELD OF NO. 12 USS GAUGE SHEET STEEL.
2. UNLESS OTHERWISE SPECIFIED TOLERANCE ON HORIZONTAL TAPPED HOLES TO BE .010" AND ARE TO HAVE AT LEAST THREE COMPLETE THREADS.
3. ALL STEEL SURFACES SHALL HAVE A PROTECTIVE COATING OF GRAY ENAMEL, A.C. HORN COMPANY NO.1614, SHERMAN WILLIAMS CO. NO.16076 OR DEVOE AND REYNOLDS CO. NO.21.
4. CABINET DOOR SHALL BE PROVIDED WITH CATCH AND FACILITIES TO ACCOMMODATE STANDARD SEALS AND PADLOCK WITH 5/16" HASP.
5. SAMPLES OF THE EQUIPMENT SHALL BE SUBMITTED TO THE STEAM ENGINEERING DEPARTMENT FOR APPROVAL.
6. THE EQUIPMENT SHALL MEET THE REQUIREMENTS OF THE NYS BOARD OF FIRE UNDERWRITERS AND THE DEPT OF BUILDINGS OF THE CITY OF NEW YORK.
7. NAME PLATE SHALL BE AFFIXED ON THE OUTSIDE OF THE ENCLOSURE INDICATING THE MANUFACTURERS NAME AND CATALOG NO..
8. THE FOUR LOWER TAPPINGS ARE TO BE PREFITTED WITH 1/4"-20 X 3/4" STEEL MACHINE SCREWS. THE SCREW HEAD DIAMETERS ARE NOT TO EXCEED 1/16".

METER PAN
FOR TWO VORTEX STEAM METERS

CONSOLIDATED EDISON COMPANY OF N.Y., INC.
STEAM DISTRIBUTION ENGINEERING

DATE 08-18-88
LAST REV. 01-17-13

DWG. NO. S-593

REV. 4

CONSTRUCTION STDS
MANUAL NO. 3
SECTION A51
STEAM