



## MSC I Adjusters

Summary of "Statement of Adjustment Factors - MSC" - MSC I Rate Adjustment Applicable to Bills Rendered Monthly under PSC No. 10, except for RiderM

Effective Date	<u>Residential Use</u> (In cents/kWh)		<u>Non-Residential Use</u> (In cents/kWh)	
	<u>New York City Zone *</u>	<u>Westchester Zone **</u>	<u>New York City Zone *</u>	<u>Westchester Zone **</u>
1/13/2020	(0.0321)	(0.1802)	(0.0307)	(0.1788)
2/12/2020	(0.2977)	(0.3603)	(0.2526)	(0.3152)
3/13/2020	(0.2748)	(0.4460)	(0.2366)	(0.4078)
4/13/2020	(0.3252)	(0.5078)	(0.3023)	(0.4849)
5/12/2020	(0.4133)	(0.3696)	(0.3725)	(0.3288)
6/11/2020	1.3165	0.6797	1.3409	0.7041
7/13/2020	(0.9241)	0.5078	(0.8965)	0.5354
8/11/2020	(1.8195)	0.1147	(1.7874)	0.1468
9/10/2020	(1.8955)	0.6941	(1.8579)	0.7317
10/9/2020	(0.9998)	0.3784	(0.9544)	0.4238

\* Applicable to Customers in NYISO electrical load zone J.

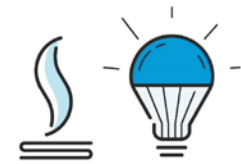
\*\* Applicable to Customers in NYISO electrical load zones H and I.

This summary is not intended to replace the official Statements on file with the NYPSC. The Company does not guarantee that this summary's contents reflect the actual charges on the Statements on file with the NYPSC. Those Statements can be viewed on the NYPSC's website:

<http://www.dps.ny.gov/tariffs.html>

### Contact Us

If you have any questions or comments, please [visit our ESCO website](#) or email [RetailAccess@coned.com](mailto:RetailAccess@coned.com).



## MSC II Adjusters

Summary of "Statement of Adjustment Factors - MSC" - MSC II Rate Adjustment Applicable to Bills Rendered Monthly under PSC No. 10, except for Rider M

The following charges are applicable to Full-service Customers who are not served under Rider M.

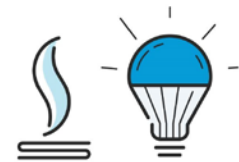
Effective Date	<u>Applicable to Customers who would be served under Rider M</u>	<u>Applicable to All Other Customers</u>
	(In cents/kWh)	(In cents/kWh)
1/13/2020	0.3716	1.7120
2/12/2020	0.1877	2.6335
3/13/2020	0.2485	2.3760
4/13/2020	0.3509	2.4567
5/12/2020	0.2417	0.5047
6/11/2020	0.2505	0.5731
7/13/2020	0.1287	(0.1631)
8/11/2020	0.1828	0.0617
9/10/2020	0.0782	0.0319
10/9/2020	0.1639	0.4066

This summary is not intended to replace the official Statements on file with the NYPSC. The Company does not guarantee that this summary's contents reflect the actual charges on the Statements on file with the NYPSC. Those Statements can be viewed on the NYPSC's website:

<http://www.dps.ny.gov/tariffs.html>

### Contact Us

If you have any questions or comments, please [visit our ESCO website](#) or email [RetailAccess@coned.com](mailto:RetailAccess@coned.com).



## MAC Adjusters

Summary of "Statement of Adjustment Factor – MAC"<sup>1</sup> Rate Adjustment Applicable to Bills Rendered Monthly under PSC No. 10 (except SC11)

Effective Date	MAC	Uncollectible-	Transition
	<u>Reconciliation</u>	<u>Bill Expense</u>	<u>Adjustment</u>
	Applicable to Use <u>By All Customers</u>	Applicable to Use <u>By All Customers</u>	Applicable to Use <u>By All Customers</u>
	<u>(in cents/kWh)</u>	<u>(in cents/kWh)</u>	<u>(in cents/kWh)</u>
1/13/2020	0.3421	0.0095	0.0001
2/12/2020	0.2687	0.0080	0.0001
3/13/2020	(0.0553)	0.0053	0.0001
4/13/2020	(0.6371)	0.0061	0.0001
5/12/2020	(0.2344)	0.0032	0.0001
6/11/2020	(0.0627)	(0.0002)	0.0001
7/13/2020	0.0550	0.0008	0.0001
8/11/2020	(0.0290)	0.0025	0.0001
9/10/2020	0.1491	0.0029	0.0001
10/9/2020	0.3577	0.0018	0.0001

<sup>1</sup>These rates are applicable to billing to Customers subject to the MAC pursuant to General Rule 26.1. This summary is not intended to replace the official Statements on file with the NYPSC. The Company does not guarantee that this summary's contents reflect the actual charges on the Statements on file with the NYPSC. Those Statements can be viewed on the NYPSC's website:  
<http://www.dps.ny.gov/tariffs.html>

### Contact Us

If you have any questions or comments, please [visit our ESCO website](#) or email [RetailAccess@coned.com](mailto:RetailAccess@coned.com).