

## Unaccounted for Energy Factors

In its April 24, 2009 order, the Public Service Commission directed the Company to supply to ESCOs hourly "unaccounted-for-energy" (UFE) factors for each load zone in Con Edison's service territory and to amend its Retail Access Implementation Plan and Operating Procedure to reflect that requirement. The Company previously supplied average monthly UFE factors for each zone.

Please see the attached spreadsheet for the updated **June 2019 UFE Factors** and **July 2019 UFE Factors**.

Note: In addition to the **June 2019** and **July 2019 UFE Factors**, this newsletter includes the UFE Factors for the **past 24 months**. We have moved the historical UFEs from this Newsletter to a section on our website titled "Related Information".

### Contact Us

If you have any questions or comments, please [visit our ESCO website](#) or email [RetailAccess@coned.com](mailto:RetailAccess@coned.com).



## MSC II Adjusters

Summary of "Statement of Adjustment Factors - MSC" - MSC II Rate Adjustment  
Applicable to Bills Rendered Monthly under PSC No. 10, except for Rider M

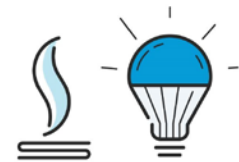
The following charges are applicable to Full-service Customers who are not served under Rider M.

Effective Date	<u>Applicable to Customers who would be served under Rider M</u> (In cents/kWh)	<u>Applicable to All Other Customers</u> (In cents/kWh)
1/11/2019	(0.1869)	0.9208
2/12/2019	0.4677	1.3044
3/14/2019	0.4004	2.0591
4/12/2019	0.4093	2.6273
5/13/2019	0.3694	1.2558
6/12/2019	0.4256	1.0313
7/12/2019	0.3559	0.5091
8/12/2019	0.2267	0.1580
9/11/2019	0.1271	0.7166

This summary is not intended to replace the official Statements on file with the NYPSC. The Company does not guarantee that this summary's contents reflect the actual charges on the Statements on file with the NYPSC. Those Statements can be viewed on the NYPSC's website: <http://www.dps.ny.gov/tariffs.html>

## Contact Us

If you have any questions or comments, please [visit our ESCO website](#) or email [RetailAccess@coned.com](mailto:RetailAccess@coned.com).



## MAC Adjusters

Summary of "Statement of Adjustment Factor – MAC"<sup>1</sup> Rate Adjustment  
Applicable to Bills Rendered Monthly under PSC No. 10 (except SC11)

Effective Date	<u>MAC Reconciliation</u> Applicable to Use <u>By All Customers</u> (in cents/kWh)	<u>Uncollectible-Bill Expense</u> Applicable to Use <u>By All Customers</u> (in cents/kWh)	<u>Transition Adjustment</u> Applicable to Use <u>By All Customers</u> (in cents/kWh)
1/11/2019	0.0440	0.0070	0.0000
2/12/2019	(0.1780)	0.0068	0.0000
3/14/2019	(0.1110)	0.0047	0.0000
4/12/2019	(0.5832)	(0.0018)	0.0000
5/13/2019	(0.2089)	0.0074	0.0000
6/12/2019	0.1884	0.0024	0.0000
7/12/2019	0.1126	0.0022	0.0000
8/12/2019	0.0797	0.0059	0.0000
9/11/2019	0.1407	0.0065	0.0000

<sup>1</sup>These rates are applicable to billing to Customers subject to the MAC pursuant to General Rule 26.1.

This summary is not intended to replace the official Statements on file with the NYPSC. The Company does not guarantee that this summary's contents reflect the actual charges on the Statements on file with the NYPSC. Those Statements can be viewed on the NYPSC's website: <http://www.dps.ny.gov/tariffs.html>

### Contact Us

If you have any questions or comments, please [visit our ESCO website](#) or email [RetailAccess@coned.com](mailto:RetailAccess@coned.com).